

LINSN LED Display Screen

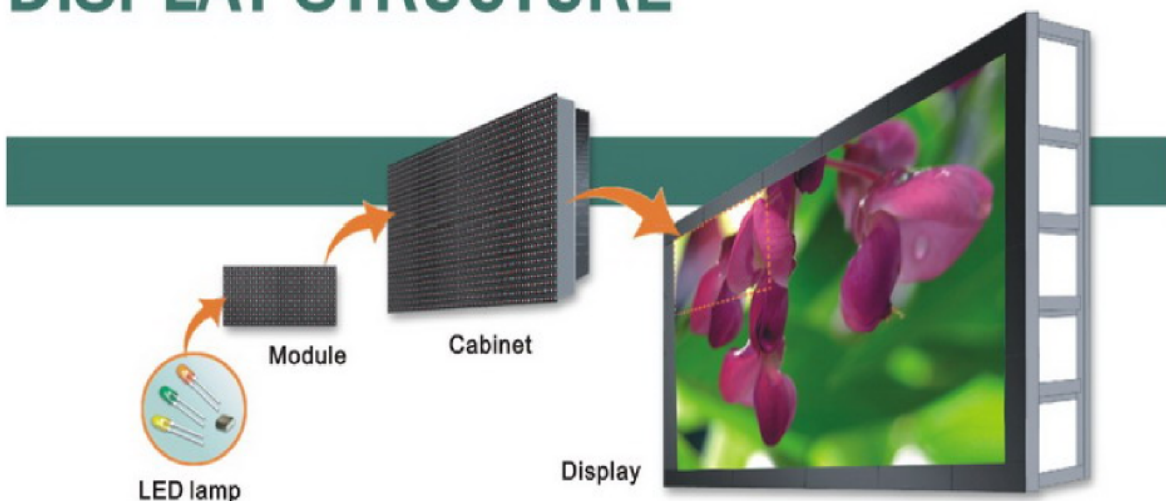
User's Manual

Version 1.13---edited by linsnled.

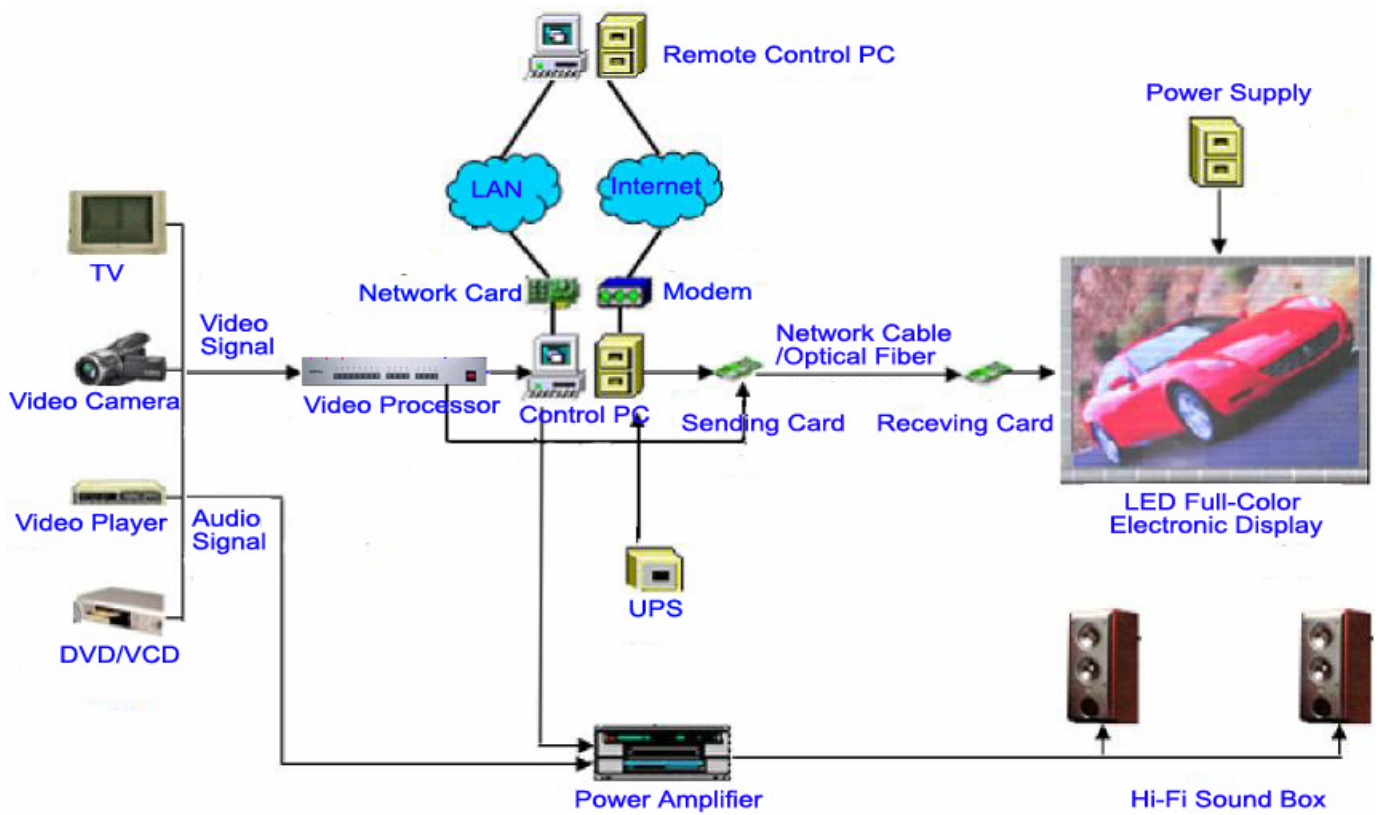
1 Services And Function Of LINSN LED Display Screen

LED Electronic Display Screen is a large display screen system combining micro-electronic, computer and information processing technologies. It is renowned for the distinct features of bright colors, high brightness, durability and stability. Of all the display media choices, LED Electronic Display Screen ranks number one, and is widely used in commercial advertisement, stadiums, information transmission, news releasing, stock exchange and etc. It is one of the most advanced display media all over the world.

DISPLAY STRUCTURE



2 LED Electronic Display System Structure

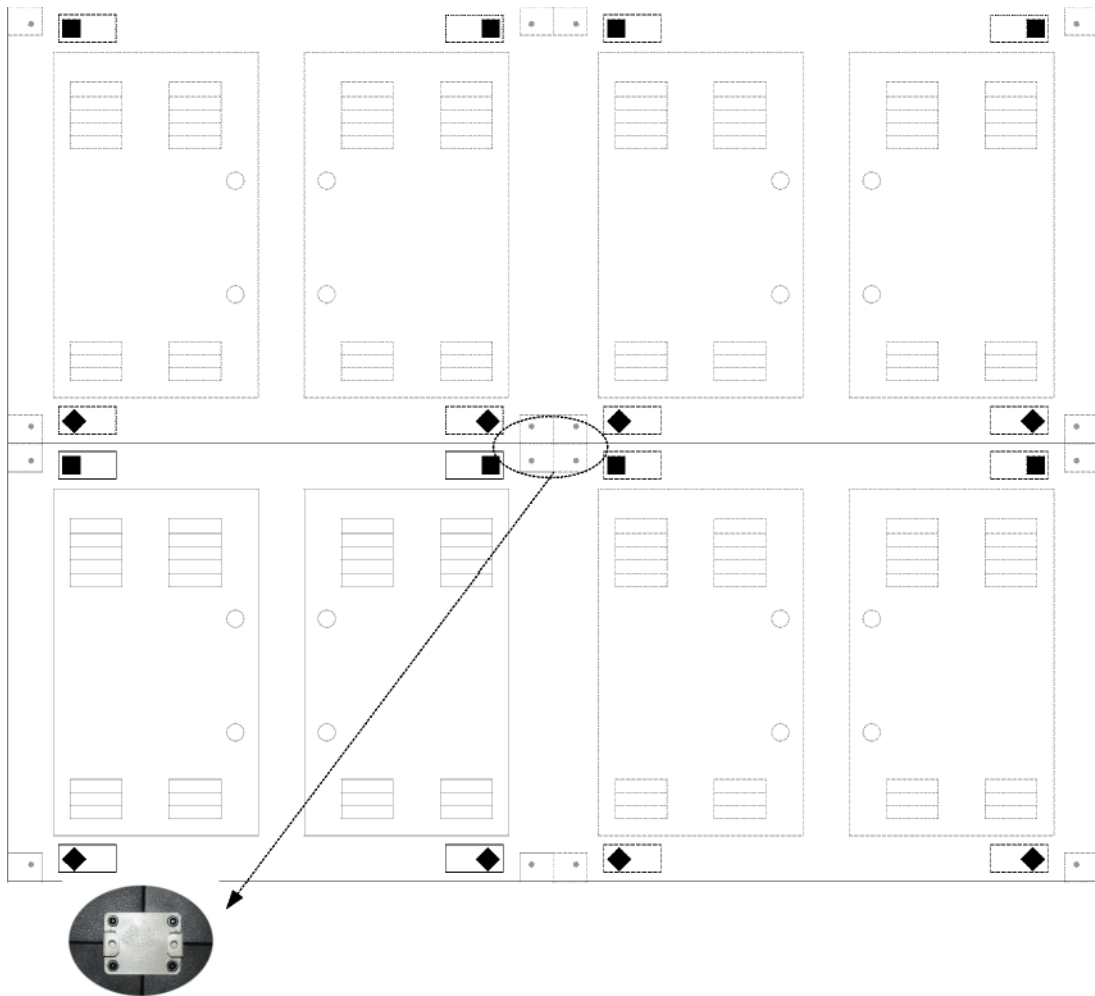


◆ LED display installation steps ◆

1. Assemble the cabinets on the Structure;
2. Connect all UTP and AC cables between cabinets;
3. Install Graphic Card and Sending Card (including the serial interface between PC and Sending Card);
4. Connect UTP between Sending Card and Receiving Card;
5. Power on LED display(Checking whether the display has short circuit);
6. Power on control computer;
7. Checking the DVI Mode of Display is On(Desktop→Property→Settings→Advanced→Display)

3 The Display Screen And Connection Diagram

A. Guide of LED display mechanical installation



For combining cabinets and fixing the display to the structure(The dimension of screw is M10*20)

B. Socket WS16 and WP20 are equipped on the back side of the Cabinet

WS16

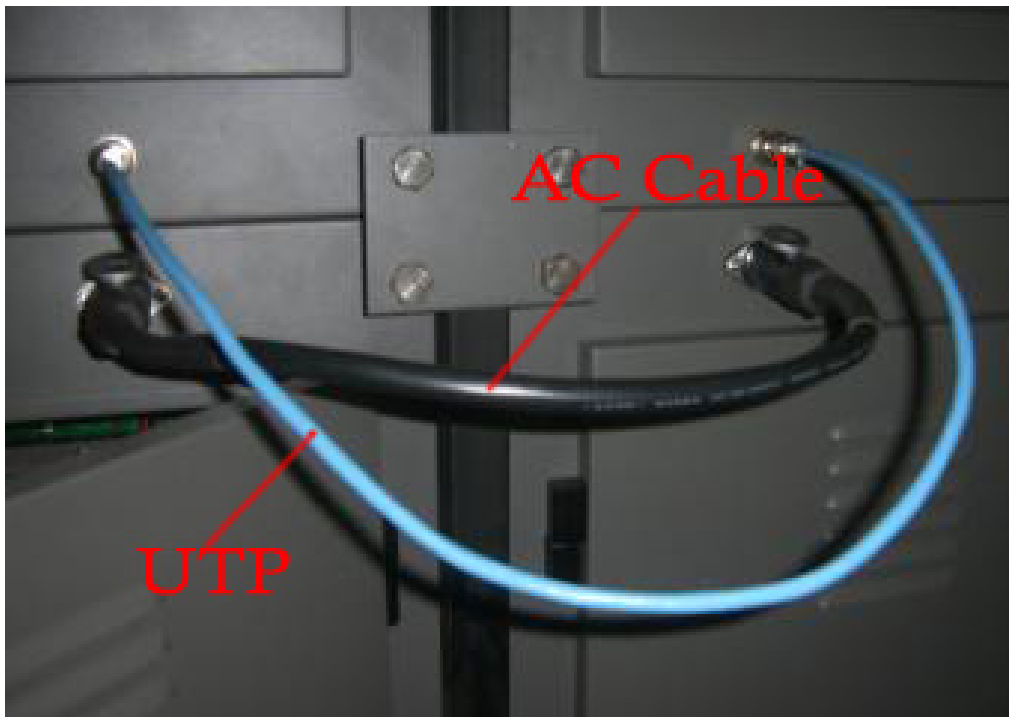


UTP

WP20

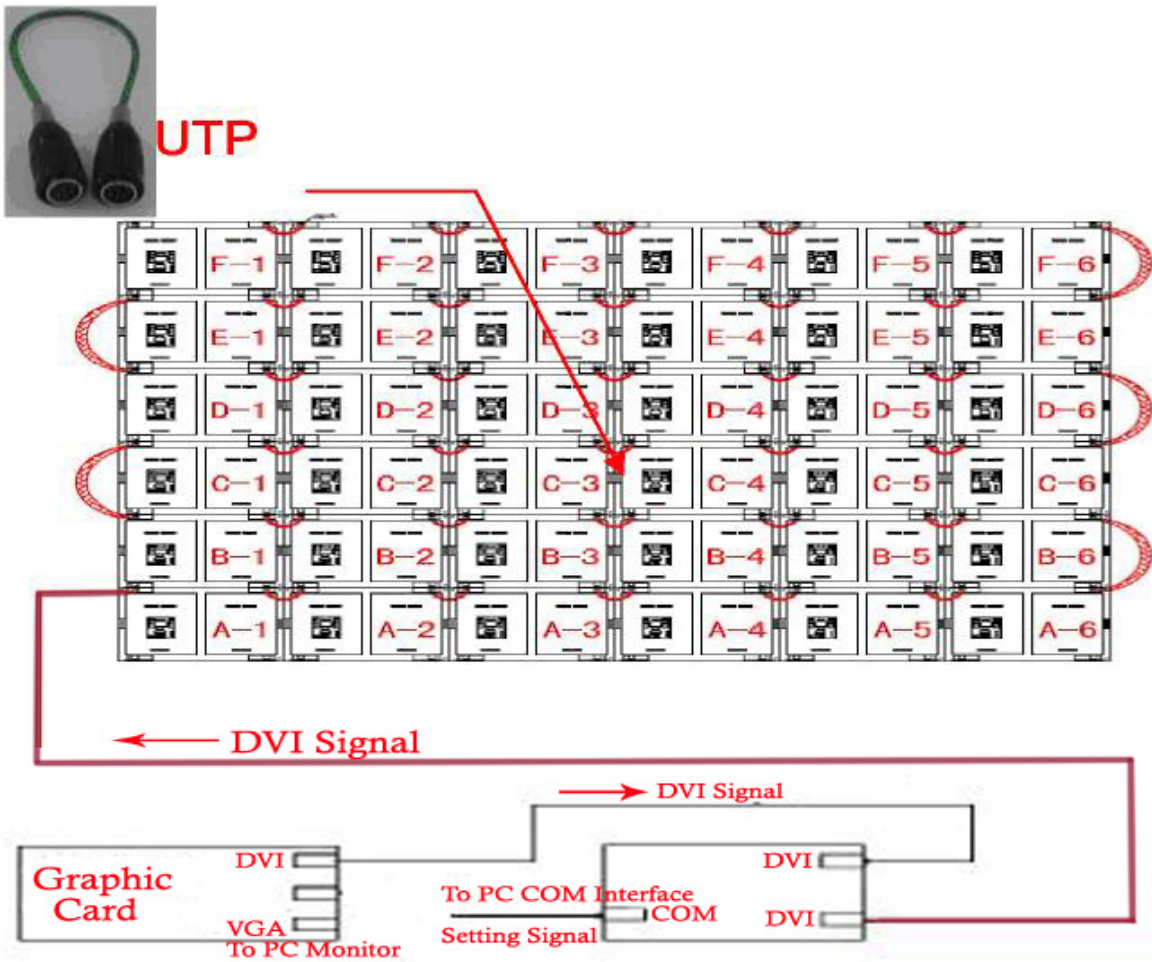
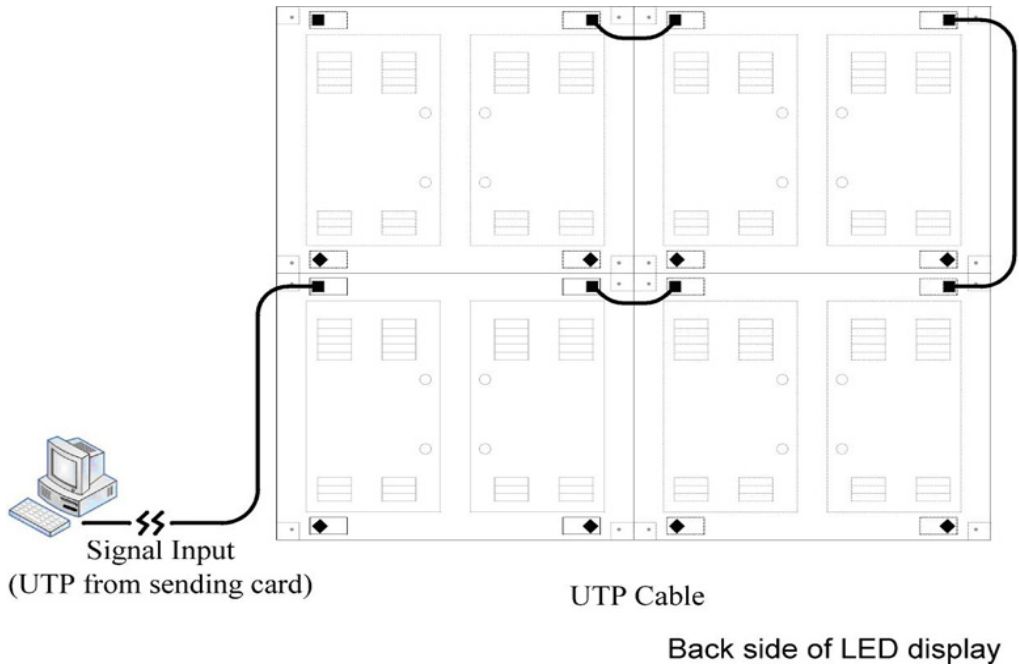


AC Cable



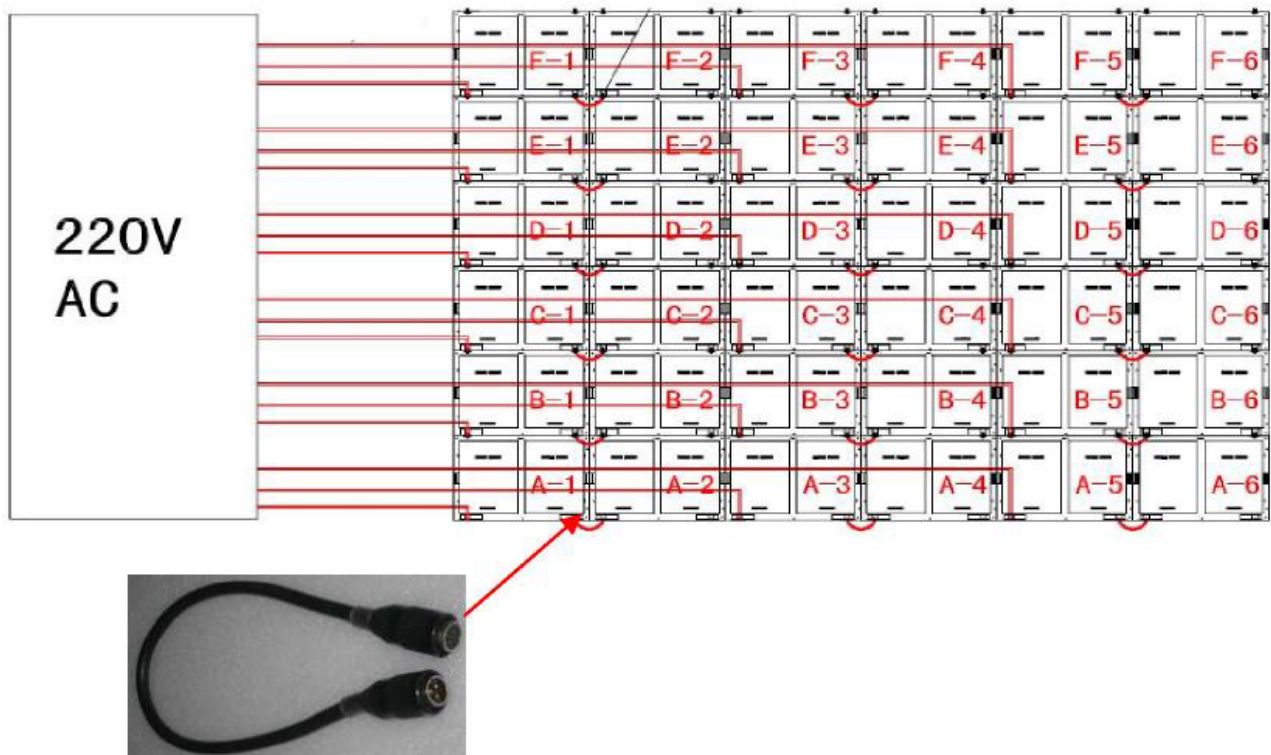
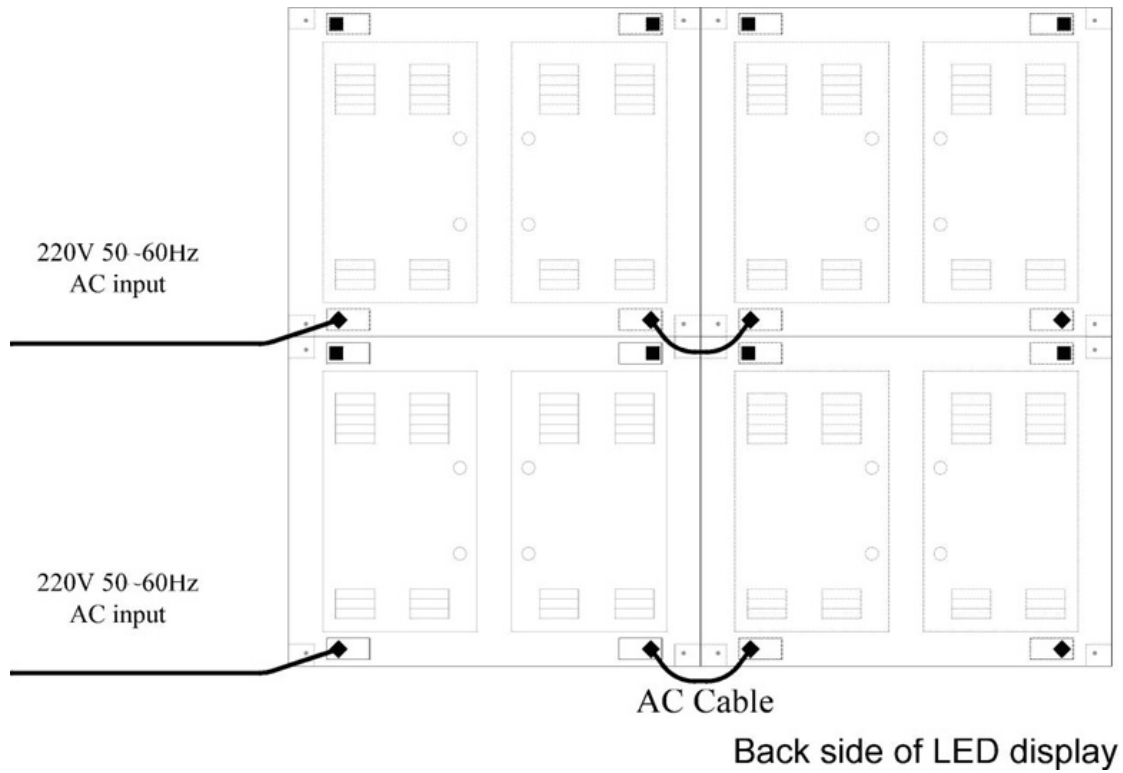
Electric connection can be set up correctly by connecting UTPs and AC cables to all cabinets.

C. The UTP Connection of the Display



Connection of UTP

D. The AC Cable Connection of the Display

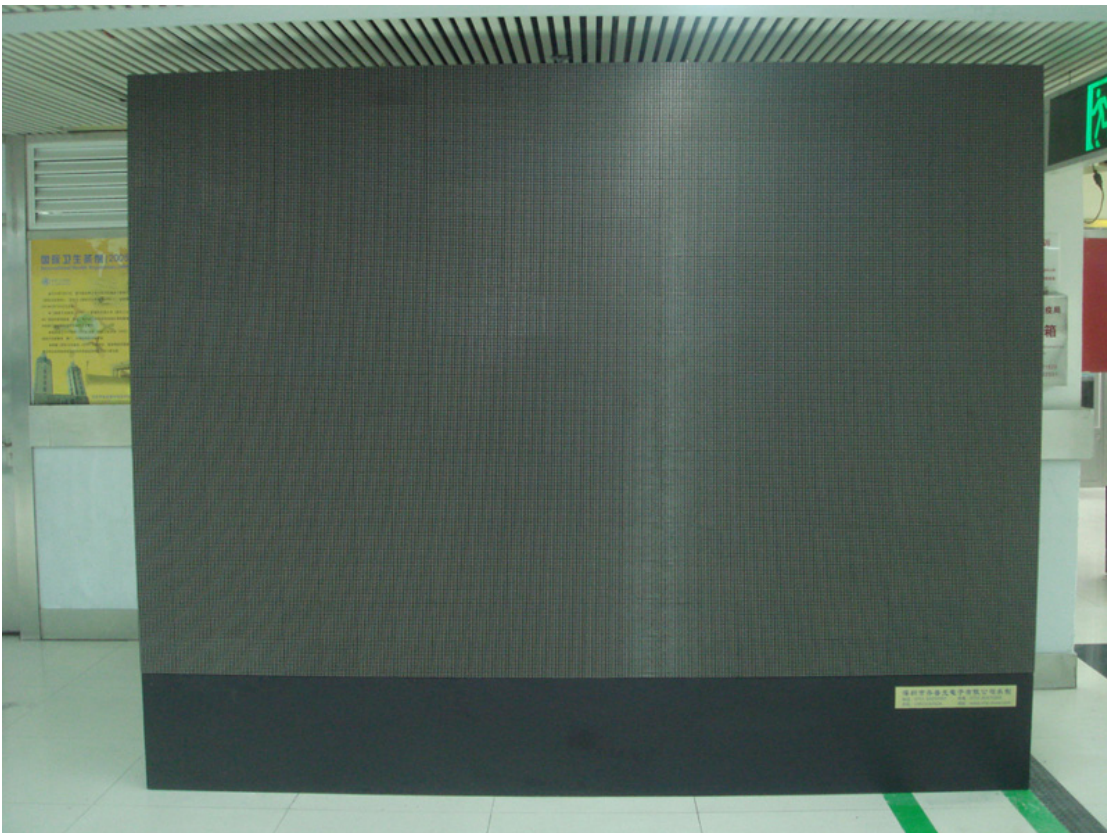


Connection of AC cable

[Linsn](#) LED Display Controller Installation Manual



Back connection of the whole Display screen

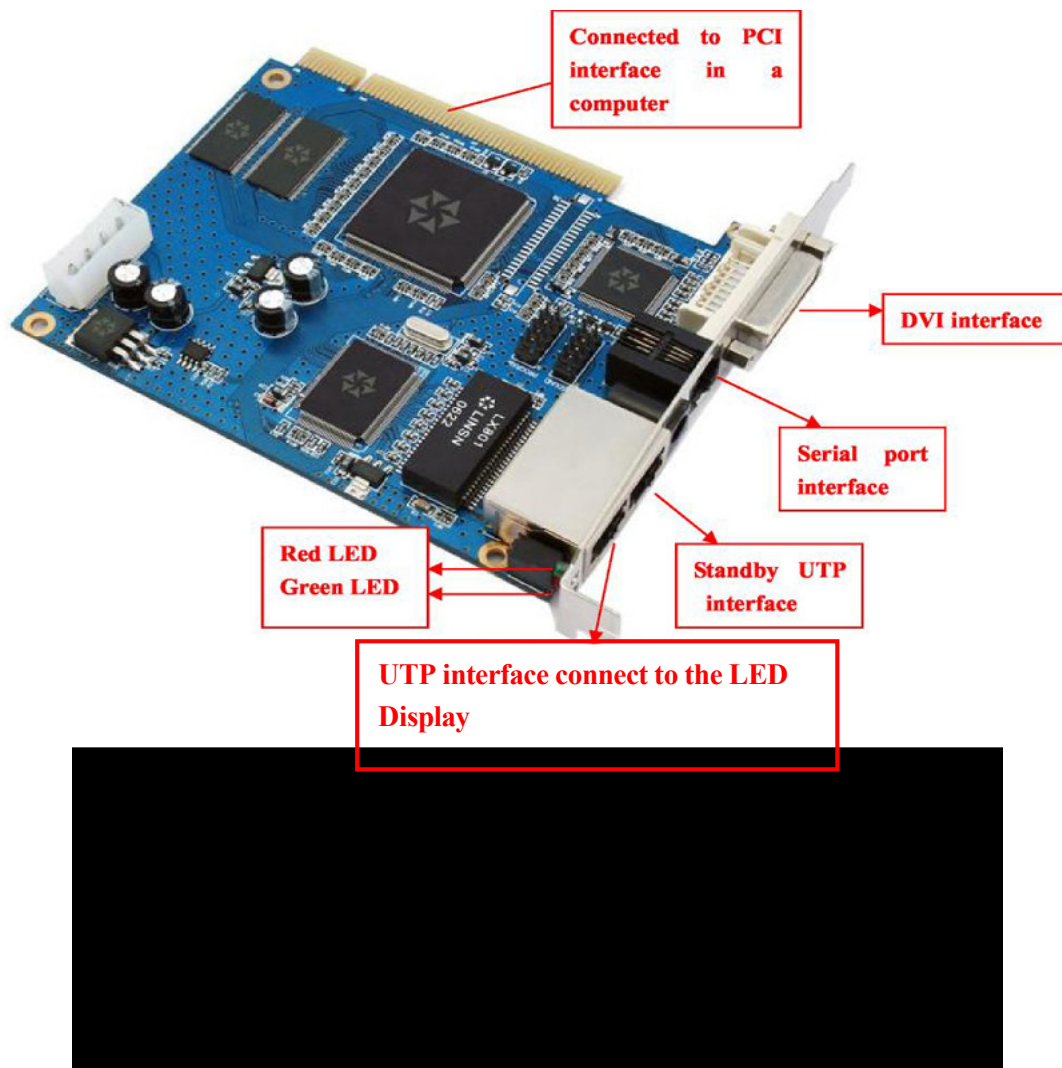


Front face of the whole Display screen

E-mail: leddisplays@hotmail.com Skype: leddisplays Website: www.linsnled.com

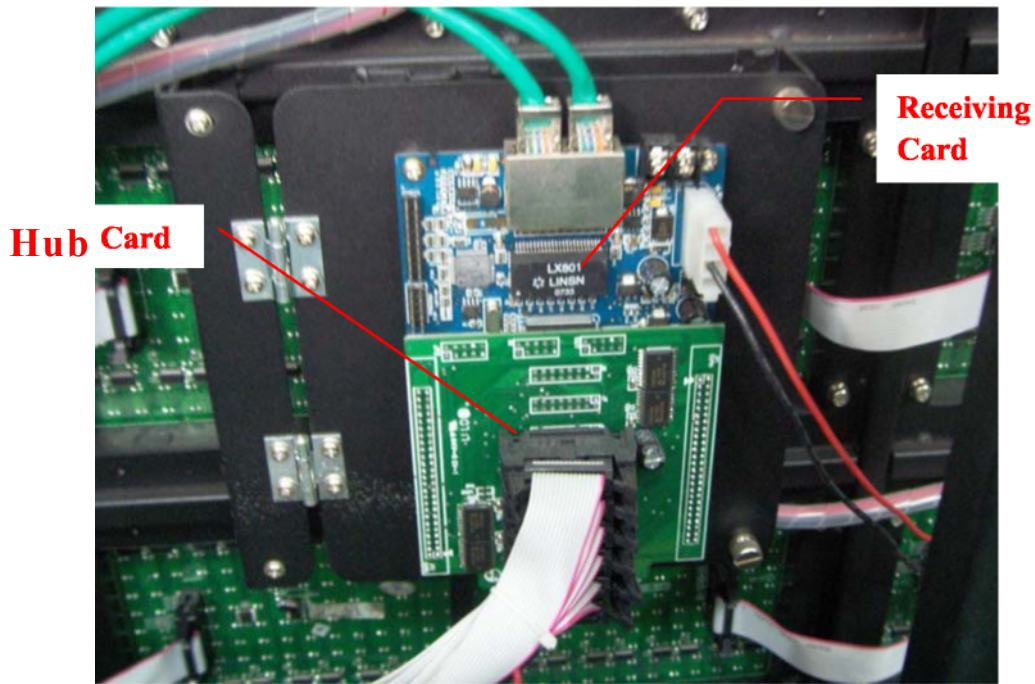
4 Control System and Software

A. Sending Card

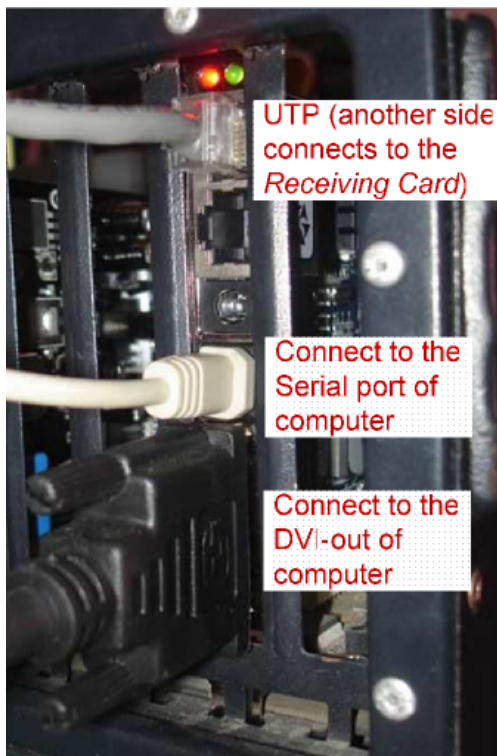


The Sending Card is installed in an unused PCI socket of control computer. Additional function interface is connected to Serial port, and one of the Data-output interfaces is connected to Receiving Card by UTP.

B. Connecting between Receiving Card and Hub Card



One cabinet has a Receiving Card and a Hub Card, using two 25-pin connectors to connect them.

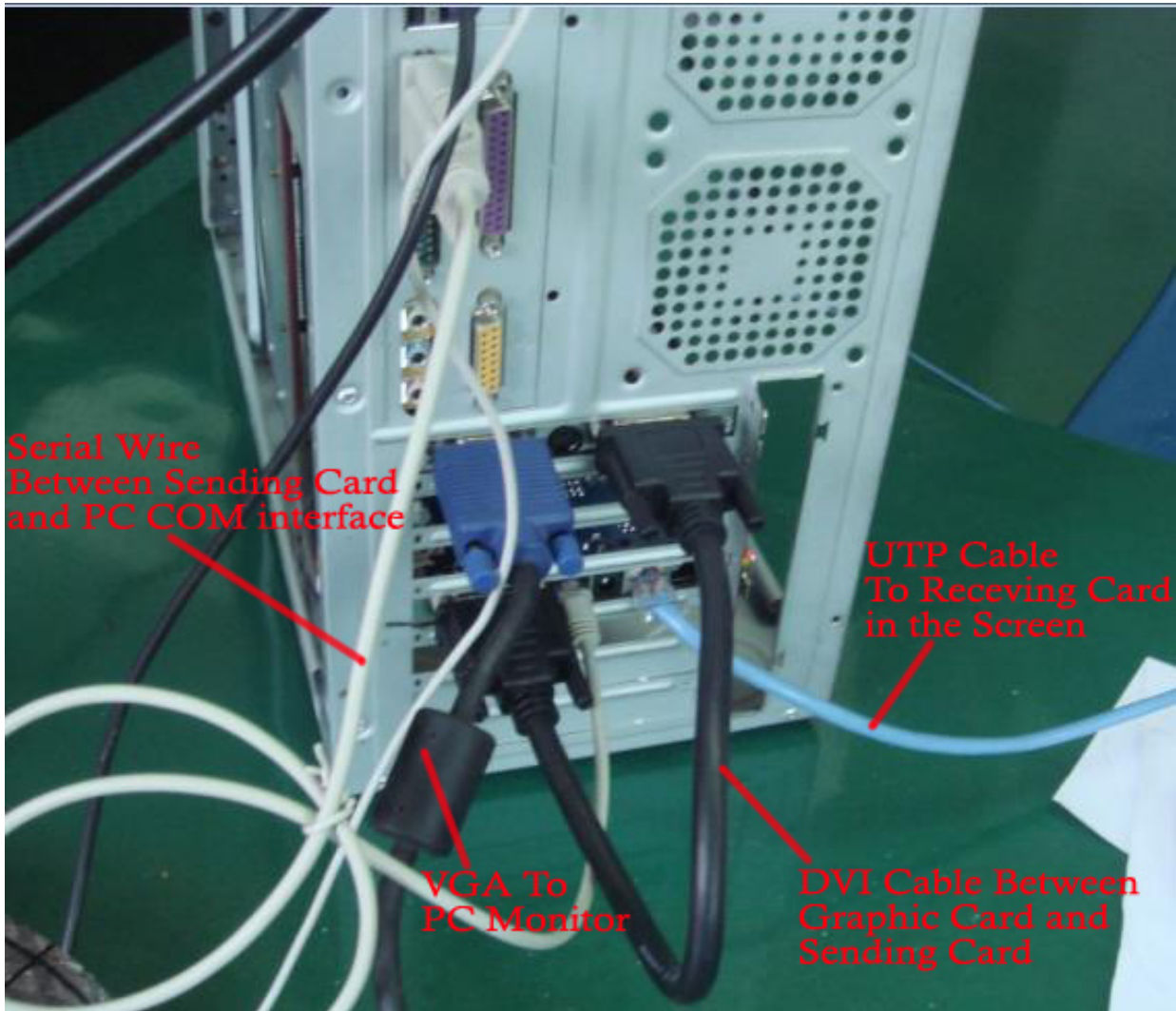


Digital Visual Interface (DVI)



Serial port

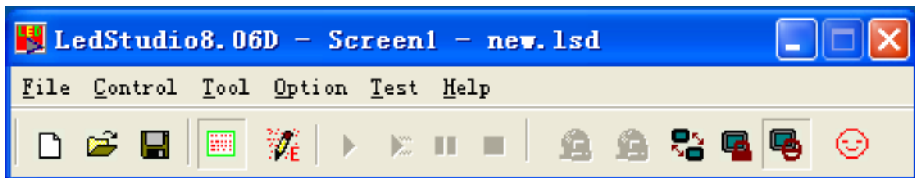
C. The Connection Diagram of the Control PC



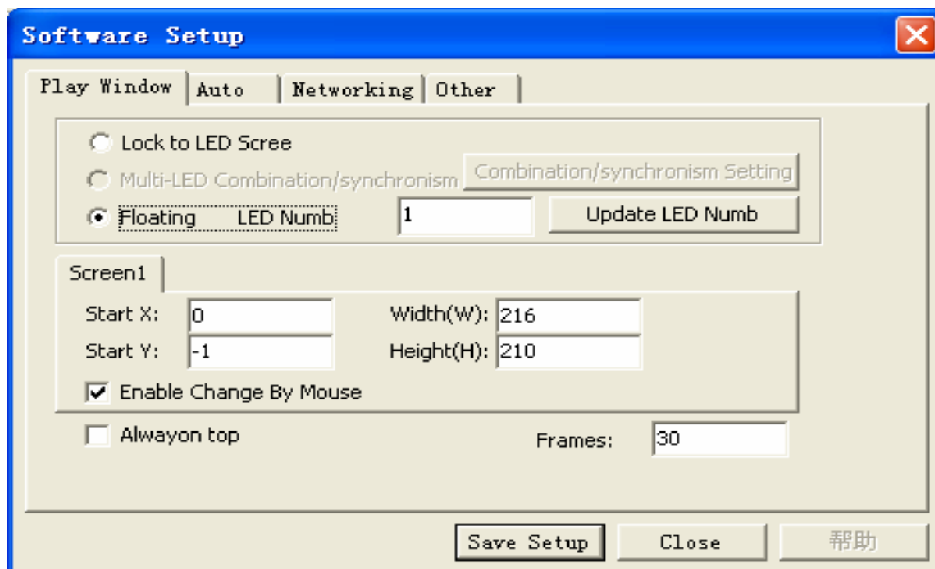
5 Appendix(Software):

A. LED Studio Manual

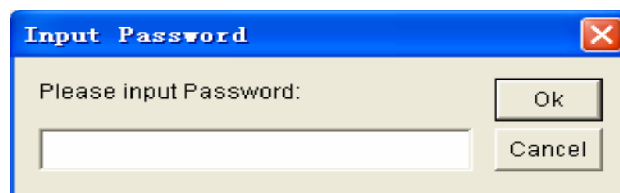
After install the Led Studio in the computer, and then open it, you will get a window as below:



Click “**option** ——>**software setup**”, and then will appear a dialog box, as shown in below figure.

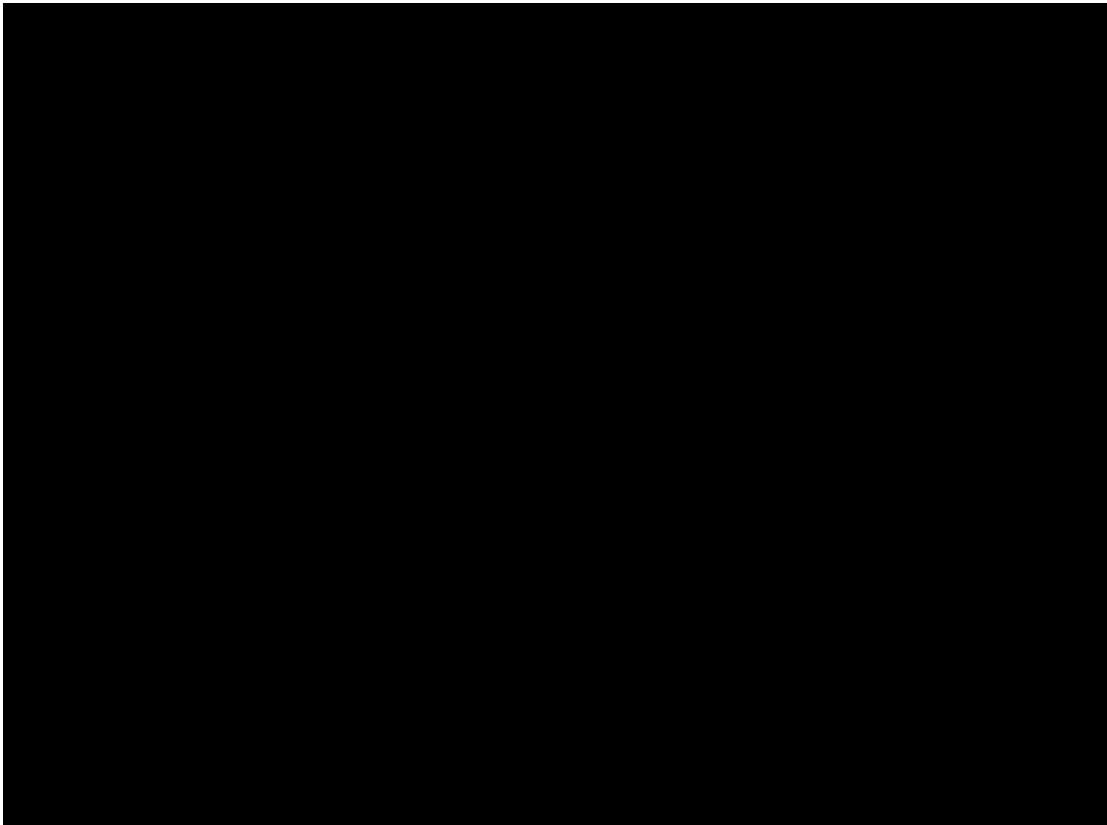


Then type “**linsn**” in the keyboard and you can find a Password dialogue box as below.(Computer screen shows nothing when inputting “linsn” by keyboard.)

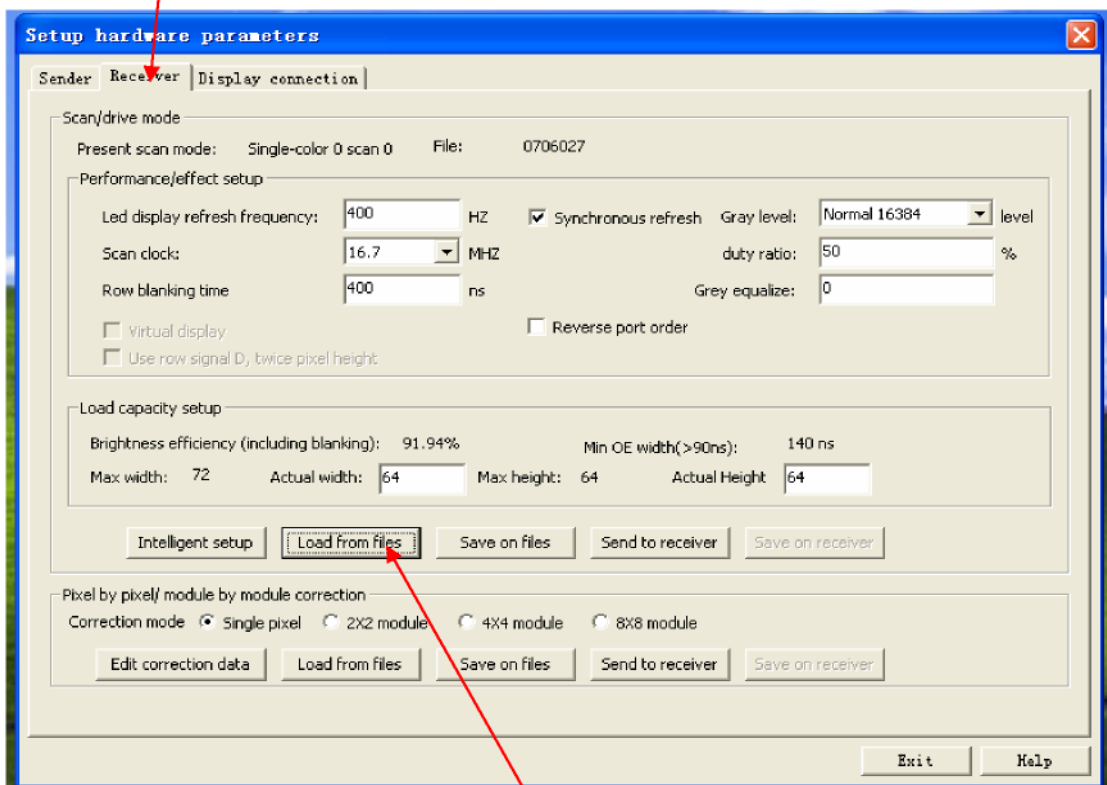


The password is 168. Then click “**OK**”, and enters the following windows:

[Linsn](#) LED Display Controller Installation Manual



Following the above chart, and finish the “**Sender**” set click ”**Save on sender**” then Click ”**Receiver**”, enters the following windows



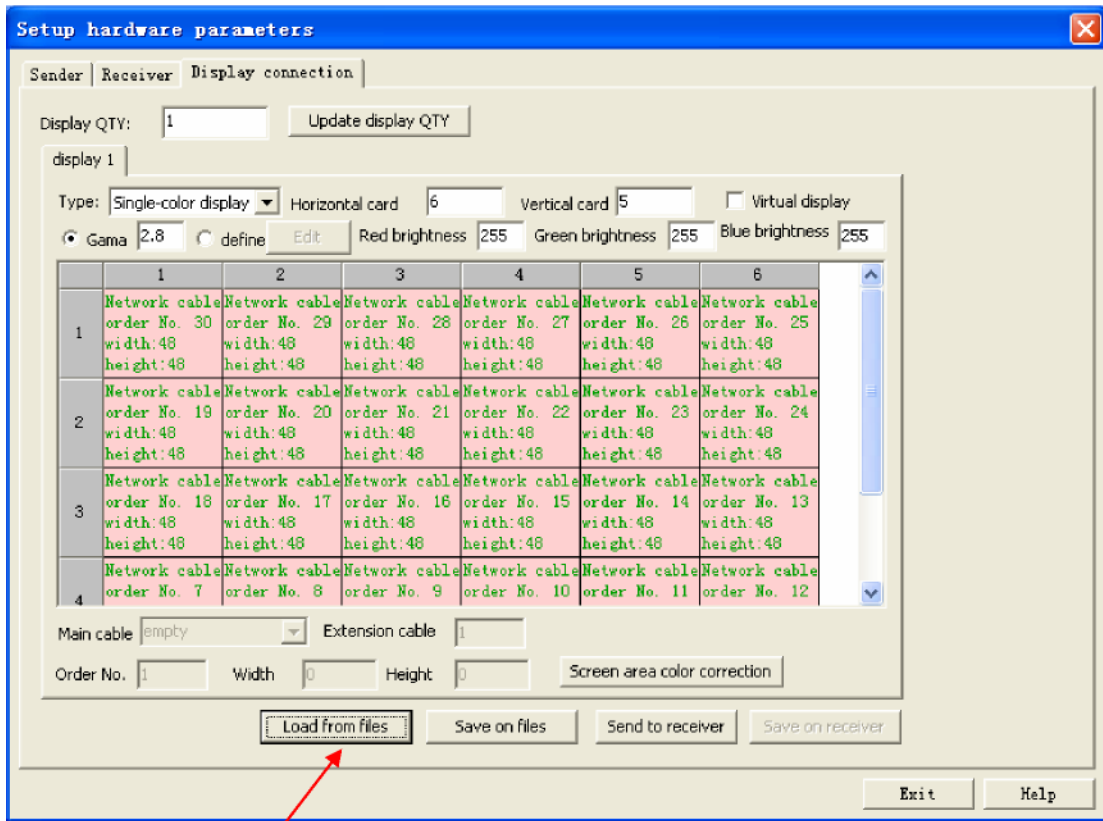
Please upload the CD into your PC. Click “**Load from files**”, and load the corresponding

E-mail: leddisplays@hotmail.com Skype: leddisplays Website: www.linsnled.com

Linsn LED Display Controller Installation Manual

procedures--“P20. RCG” the procedures is in the attached CD then set the data according above chart.

After finish that, please click” **Send to receiver**” then click” **Save on receiver**”, in the end ,click “**Display connection**”, you can find a windows as below:



Click “**Load from files**”, and load corresponding procedures—“P20.CON” see in the attached CD after finish that, click” **Send to receiver**” then click “**Save on receiver**”.